



Appliqué Instructions

Applique designs are made up of 3 – 4 basic stitches

1. **Placement Stitch** – all designs will have this stitch
2. **Cutting Stitch** – all designs will have this stitch
3. **Tack Down Stitch** – most designs will have this stitch and it's usually a **Zig Zag Stitch**.
NOTE: Designs that have a “**Fancy Final Stitch**” instead of a **Satin Stitch** don't usually have a **Tack Down Stitch** because it will be seen and take away from the overall look.
4. **Final Stitch** – the **Final Stitch** is usually a **Satin Stitch**, but it can be almost any kind of stitch. I offer several designs with a “**Fancy Final Stitch**” ~ **Zig Zag Stitch**, **Heirloom Stitch**, **Diamond Stitch**, **Feather Stitch** and **Jack & Jill Stitch**. Examples of each are on the Applique Gallery page.

Detailed Step-By-Step Instructions

1. Open applique design in your Embroidery Software.
2. Save As and name appropriately. This will ensure that you don't overwrite the original design.
3. Merge/Insert any other design elements.
4. Align, Edit, Change Stitch Order as needed. **NOTE:** If you have a multiple needle machine, you will need to add “stops” between color changes so that you can add fabric after the **Placement Stitch** and trim the fabric after the **Cutting Stitch**.
5. Save and Transfer the design to your machine.
6. Hoop your fabric [remember to stabilize].
7. Put hoop in machine.
8. Sometimes the **Placement Stitch** will stitch first, but sometimes other elements of the design will stitch first [like the feet in the Chick Applique Design to the right].
9. Start stitching the design. When the **Placement Stitch** stitches you'll use it as a guide to place your fabric.
10. **Prepare Applique Fabric** [Page 3] & **Choose Cutting Method** [Page 4]

Placement Stitch



Example: The feet on the Applique Chick stitch first





Detailed Step-By-Step Instructions [Con't]

11. **Print Pattern Method** - spray back of cut-out fabric pattern with a little adhesive spray and place evenly on **Placement Stitch**.

Cutting Stitch Method - Place the fabric square on top of the **Placement Stitch**.

12. Start stitching again - a **Cutting Stitch** will stitch. Once it stitches, you can take the hoop out of the machine to trim away the excess fabric if you used the **Cutting Stitch Method** or if you used the **Print Pattern Method**, you shouldn't need to do anything.

13. Put hoop back in machine.

Cutting Stitch Method - Cutting Stitch & Trimming around Cutting Stitch



Make a hole to get started on inside cuts



Finished Diamond Stitch

#1333 Heirloom Applique Monogram



14. Start stitching again - a **Tack Down Stitch** will stitch - this stitch will tack down the edges of the appliqué fabric. **NOTE:** If this appliqué has a "**Fancy Final Stitch**", this will be the **Final Stitch** instead of the **Tack Down Stitch**.

15. Start stitching again - The **Final Stitch** [**Satin Stitch**] will stitch - this will finish the appliqué design. If there are more appliqué elements in the design you will want to repeat the steps above until complete.

16. Embroidery Details - there may be additional embroidery details to stitch, so run the program until the design has completed stitching.

Contact Us

AKDesigns Boutique

CustomerService@AKDesignsBoutique.com

www.akdesignsboutique.com

Copyright 2010



How To Prepare Applique Fabric

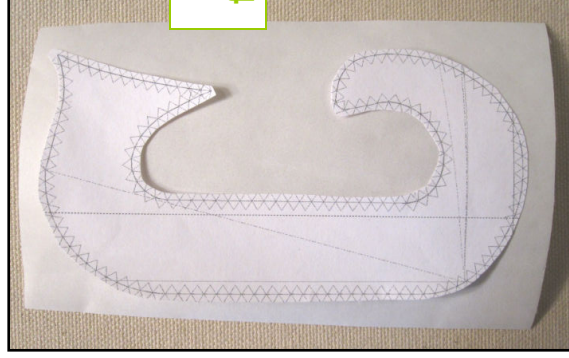
Always press your appliqué fabric and prepare with a fusible backing [like Fuse Adhere].

1. Place your appliqué pattern or shape on top of the fuse adhere and cut a box around it with a generous space all the way around.
2. Place your fabric face down, place the fuse adhere fusible side down [wax paper side up] on top of your fabric.
3. Use a Teflon pressing cloth or larger piece of scrap fabric on top of the wax paper side before pressing. The pressing cloth or large piece of fabric serves as a "buffer" between your iron and the fuse adhere.

Nice, smooth, fully adhered edge [Fuse Adhere]



Cut piece of fusible backing



Using large piece of scrap fabric as a pressing cloth



Press to fully adhere applique to item [Fuse Adhere]



4. Set your iron to a synthetic setting [this will be a lower heat setting].
5. Press lightly without dragging the iron.
6. Check to see if the edges are adhered - if they are, you're finished, if they aren't repeat until they are.
7. Cool for about 20-30 seconds.
8. Remove the wax paper. **NOTE:** If fuse adhere is tacky to the touch, it will also be "gummy" when stitching. Please allow to fully cool before stitching for best results.
9. Follow instructions for applique as normal.
10. If using Fuse Adhere ~ Once applique is finished stitching, press to fully adhere applique to item.

Contact Us

AKDesigns Boutique

CustomerService@AKDesignsBoutique.com

www.akdesignsboutique.com

Copyright 2010



Choose Cutting Method

There are 2 easy methods for cutting your applique fabric ~ **Print Pattern** or **Cutting Stitch**.

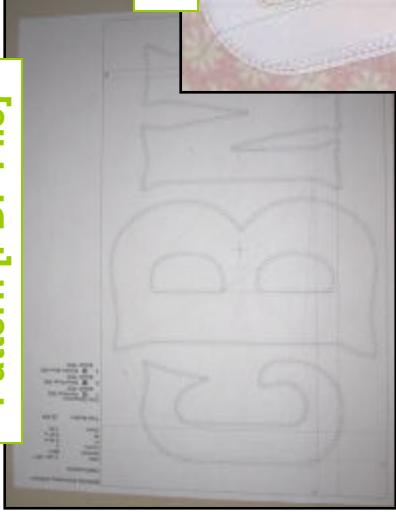
Print Pattern

1. Print the Pattern [PDF file] that is included with your appliqué design.
2. Cut out the pattern.
3. Use the pattern to cut a piece of fusible backing [or Fuse Adhere].
4. Prepare Applique Fabric using the instructions on page 3.
5. Spray a little adhesive spray on the back of the pattern.
6. Lay the applique fabric face up and place the pattern on top of it.
7. Cut around the pattern.
8. Repeat until all elements are cut-out.
9. Continue with Step 11 [Page 2].

Cutting Stitch

1. Print the Pattern [PDF file] that is included with your appliqué design.
2. Cut a big square around the design.
3. Use this big square to cut your square of fabric and fusible backing [or Fuse Adhere].
4. Prepare Applique Fabric using the instructions on page 3.
5. Continue with Step 11 [Page 2].

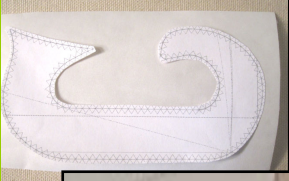
Pattern [PDF File]



Cut-out Pattern



Cut Fusible Backing



Pattern & Fabric side-by-side after cutting



Using Pattern to Cut Fabric



Contact Us

AKDesigns Boutique

CustomerService@AKDesignsBoutique.com

www.akdesignsboutique.com

Copyright 2010



Applique Tips & Tricks

- If you must resize – use the no more than 20% rule [larger or smaller] and always test stitch after making any design changes.
- Use an Applique Frame to cover a mistake. Example picture is on Gallery page ☺
- Thread Color – Use this guide to determine thread color.
 - Satin Stitch – use the same color thread for all stitches so that the cutting and tack down stitches won't be seen.
 - Zig Zag Stitch – Cutting Stitch – use a color that closely matches your fabric
 - Heirloom Stitch – Cutting Stitch – use the same color that you plan to use for the Heirloom Stitch
 - Diamond Stitch – Cutting Stitch – use the same color that you plan to use for the Diamond Stitch
 - Feather Stitch – Cutting Stitch – use the same color that you plan to use for the Feather Stitch
 - Jack & Jill Stitch – Cutting Stitch – use the same color that you plan to use for the Jack & Jill Stitch
- Always prepare applique fabric with fusible backing [like Fuse Adhere].
- Use small embroidery scissors to trim around cutting stitches in the hoop [like my Belmont or Squeezers @ www.akdesignsboutique.com].
- Every applique design is created different, so they all have different elements and different border widths.
- Remember that stabilizer is always key to a nicely stitched embroidery project.



Applique Photo Gallery

Satin Stitch



Satin Stitch w/Triple
Stitch Detail



Satin Stitch w/Triple
Stitch Detail



Diamond Stitch



Heirloom Stitch



Jack & Jill Stitch



Feather Stitch



Zig Zag Stitch



Satin Stitch



Heirloom Stitch



Applique Frame used
to Cover a Mistake



Applique stitched
w/out fabric



Jack & Jill Stitch



Heirloom Stitch



Satin Stitch



Contact Us

AKDesigns Boutique

CustomerService@AKDesignsBoutique.com

www.akdesignsboutique.com

Copyright 2010